



Murter Sea Residence 1

Ulica Lajci

“Designed for living, made for enjoying.”

Murter Sea Residence 1

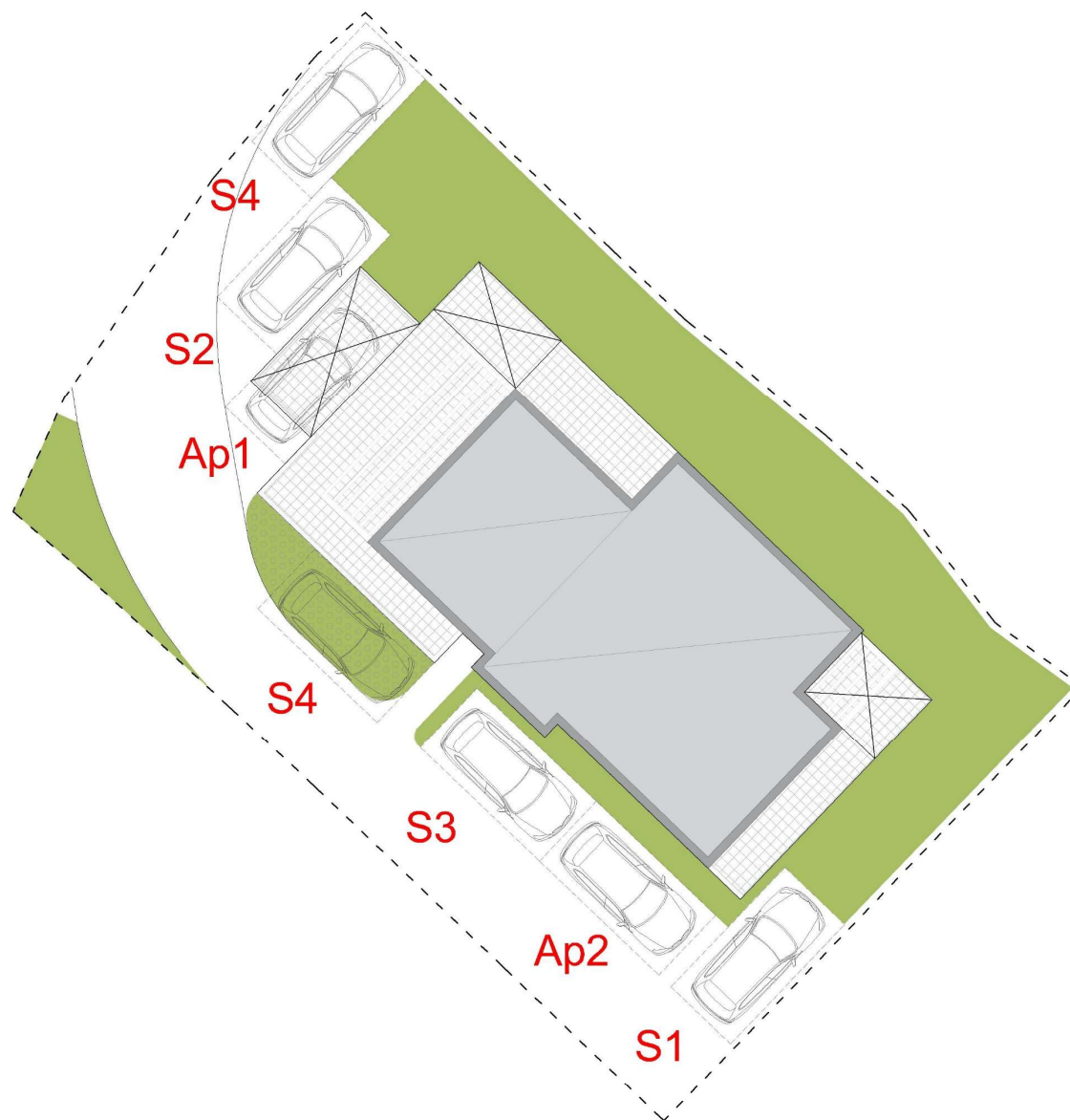
Informacije o sudionicima u projektu:

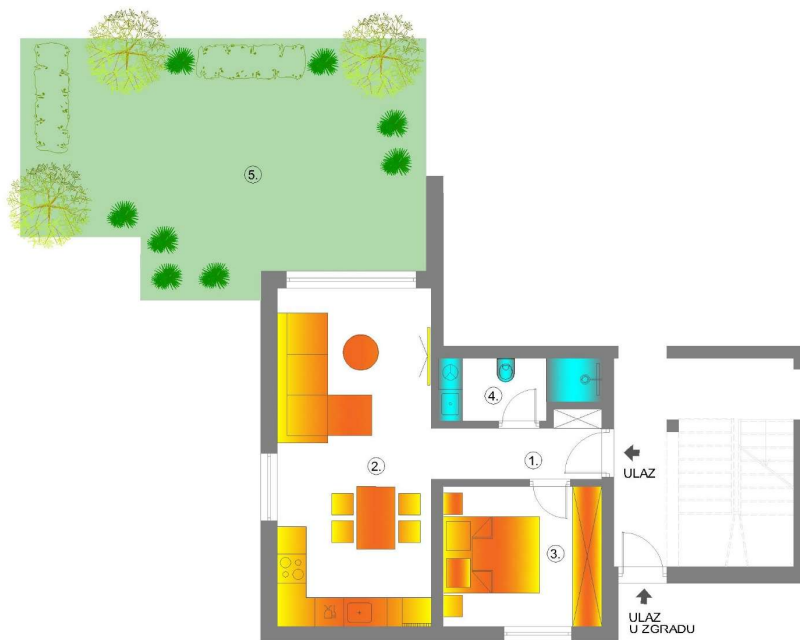
Projektant: IZGRADNJA PROJEKT d.o.o
Adresa: Ul. Stjepana Radića 32, 22000 Šibenik
E-mail: izgradnja.projekt@gmail.com
Kontakt telefon: +385 98 336 718

Investitor: PATRIA NOSTRA d.o.o. i IMPRESS GRADNJA d.o.o.
E-mail: patria.nostra.zg@gmail.com i info@impressgradnja.com
Kontakt telefon: +385 98 943 302 i +385 91 6206 446

SITUACIJA

POVRŠINA PARCELE = 530m²
BROJ PARKIRNIH MJESTA = 7 PM





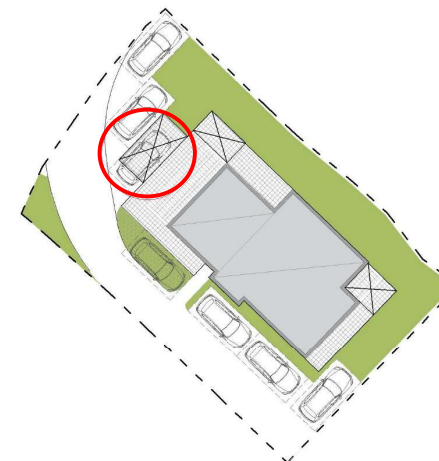
Ap1

Prizemlje
katalog stanova

- 1. Ulazni prostor
4,16m²
- 2. KUH.+BLAG.+D.B.
22,54m²
- 3. SPAVAĆA SOBA
9,61m²
- 4. KUPAONICA
3,98m²
- 5. OKOLIŠ
40,72m²x0,2=8,14m²
- 6. PARKIRNO MJESTO
12,50m²x0,25=3,13m²

UKUPNO : 51,56m²

6. PARKIRNO MJESTO:

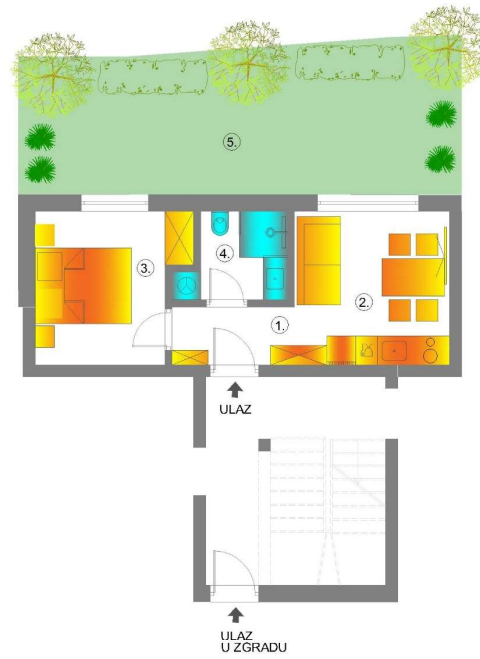


Ap2

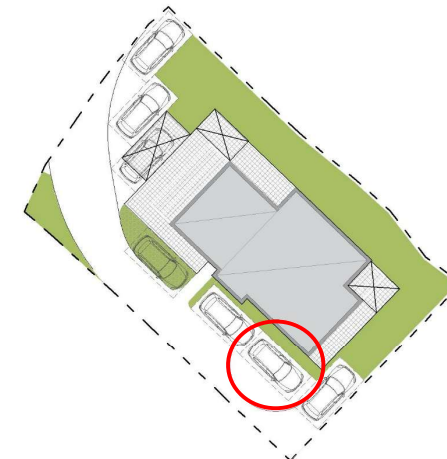
Prizemlje
katalog stanova

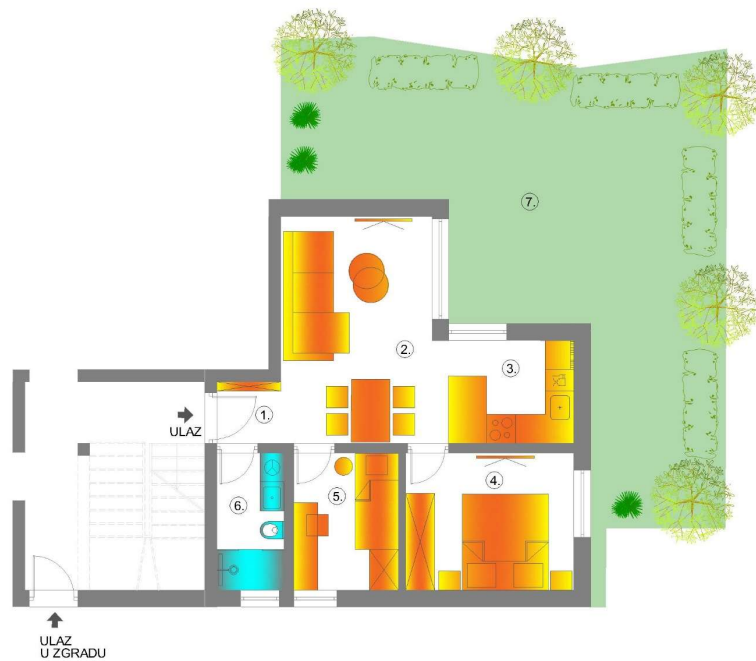
- 1. ULAZNI PROSTOR
3,06m²
- 2. KUH.+BLAG.+D.B.
10,34m²
- 3. SPAVAĆA SOBA
9,31m²
- 4. KUPAONICA
3,70m²
- 5. OKOLIŠ
28,14m²x0,2=5,63m²
- 6. PARKIRNO MJESTO
12,50m²x0,25=3,13m²

UKUPNO : 35,17m²



6. PARKIRNO MJESTO:



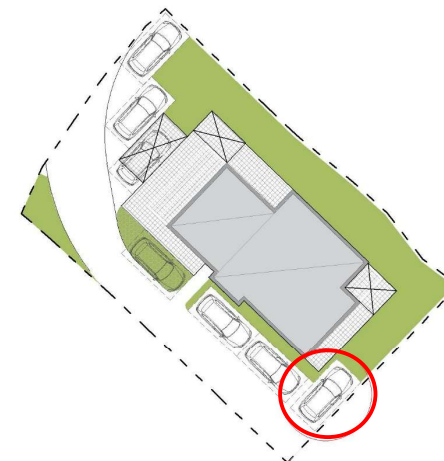


S1

Prizemlje
katalog stanova

- 1. ULAZNI PROSTOR
1,72m²
 - 2. DNEVNI BORAVAK
10,88m²
 - 3. KUH.+BLAG.
10,39m²
 - 4. SPAVAĆA SOBA 1
9,98m²
 - 5. SPAVAĆA SOBA 2
6,21m²
 - 6. KUPAONICA
4,00m²
 - 7. OKOLIŠ
56,04m²x0,2=11,21m²
 - 8. PARKIRNO MJESTO
12,50m²x0,25=3,13m²
- UKUPNO : 59,08m²

8. PARKIRNO MJESTO:



S2

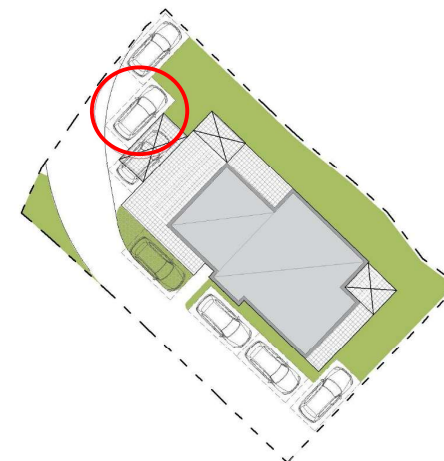
1. kat
katalog stanova

- 1. ULAZNI PROSTOR
2,74m²
- 2. DNEVNI BORAVAK
15,52m²
- 3. KUH.+BLAG.
17,19m²
- 4. SPAVAĆA SOBA 1
11,60m²
- 5. SPAVAĆA SOBA 2
10,44m²
- 6. KUPAONICA
4,27m²
- 7. TERASA 1(natkrivena)
11,39m²x0,5=5,70m²
- 8. TERASA 2(natkrivena)
6,13m²x0,5=3,07m²
- 9. PARKIRNO MJESTO
12,50m²x0,25=3,13m²

UKUPNO : 73,62m²



9. PARKIRNO MJESTO:



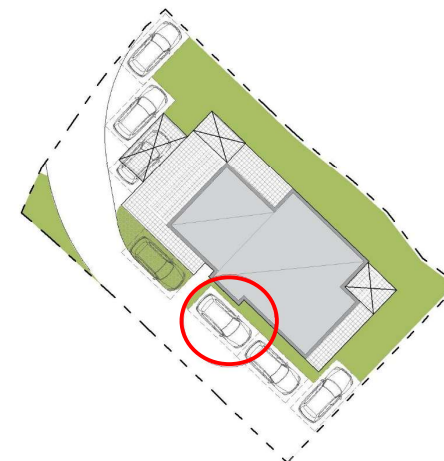
S3

1. kat
katalog stanova

- 1. ULAZNI PROSTOR
2,81m²
 - 2. D.B.+BLAG.
14,54m²
 - 3. KUHINJA
6,32m²
 - 4. SPAVAĆA SOBA 1
11,63m²
 - 5. SPAVAĆA SOBA 2
7,13m²
 - 6. PREDSOBLJE
1,12m²
 - 7. SPAVAĆA SOBA 3
6,27m²
 - 8. KUPAONICA
4,13m²
 - 9. WC
1,35m²
 - 10. TERASA (natkrivena)
6,84m²x0,5=3,42m²
 - 11. PARKIRNO MJESTO
12,50m²x0,25=3,13m²
-
- UKUPNO : 61,85m²



11. PARKIRNO MJESTO:

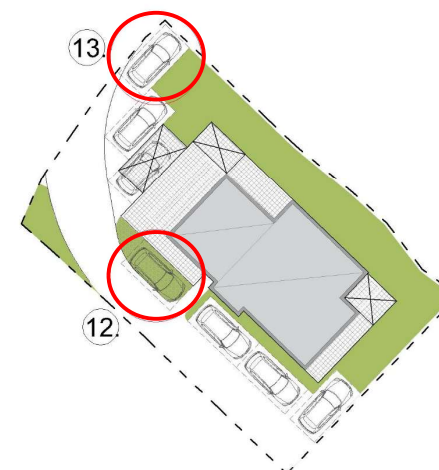


S4

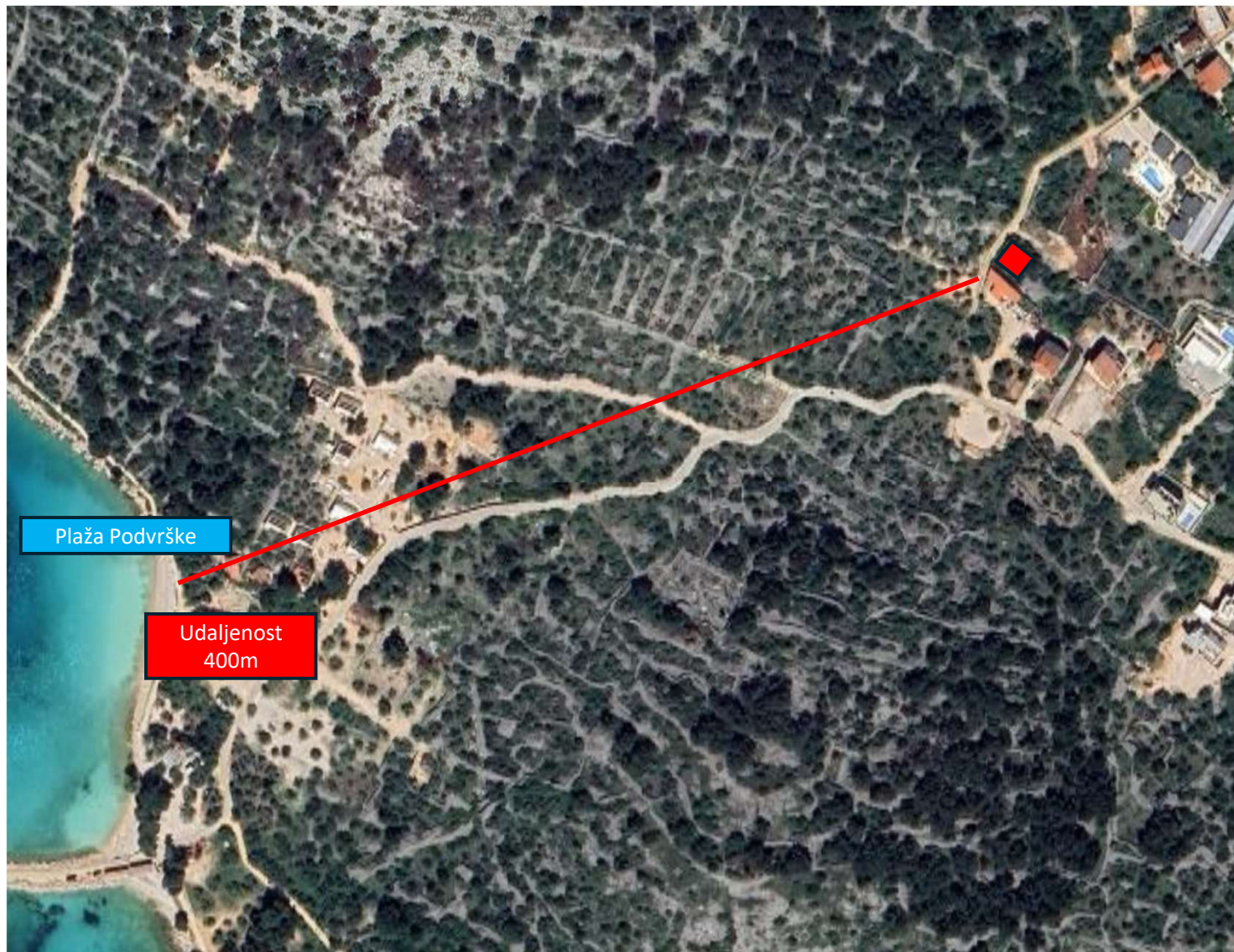
2. kat
katalog stanova

1. ULAZ
1,21m²
2. STUBIŠTE (krak 1)
2,46m²x0,75=1,85m²
3. KUHINJA
11,16m²
4. BLAG. + D.B.
26,92m²
5. SPAVAĆA SOBA 1
12,87m²
6. KUPAONICA_spavaće sobe 1
4,49m²
7. SPAVAĆA SOBA 2
7,17m²
8. SPAVAĆA SOBA 3
9,76m²
9. KUPAONICA
4,77m²
10. TERASA 1 (nenatkrivena)
56,48m²x0,25=14,12m²
11. TERASA 2 (nenatkrivena)
14,76m²x0,25=3,69m²
12. OKOLIŠ
13,94m²x0,20=2,79m²
13. PARKIRNO MJEŠTO
12,50m²x0,25=3,13m²

UKUPNO : 103,93m²







Plaža Podvrške

Udaljenost
400m







