



Murter Urban villa 4

Ulica Marka Marulića

“The best things happen when you’re home.”

Murter Urban villa 4

Informacije o sudionicima u projektu:

Projektant: IZGRADNJA PROJEKT d.o.o
Adresa: Ul. Stjepana Radića 32, 22000 Šibenik
Email: izgradnja.projekt@gmail.com
Kontakt telefon: +385 98 336 718

Investitor: PATRIA NOSTRA d.o.o
LEUT d.o.o.
Email: darkocopsb@gmail.com
patria.nostra.zg@gmail.com
Kontakt telefon: +385 98 943 3026



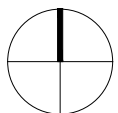
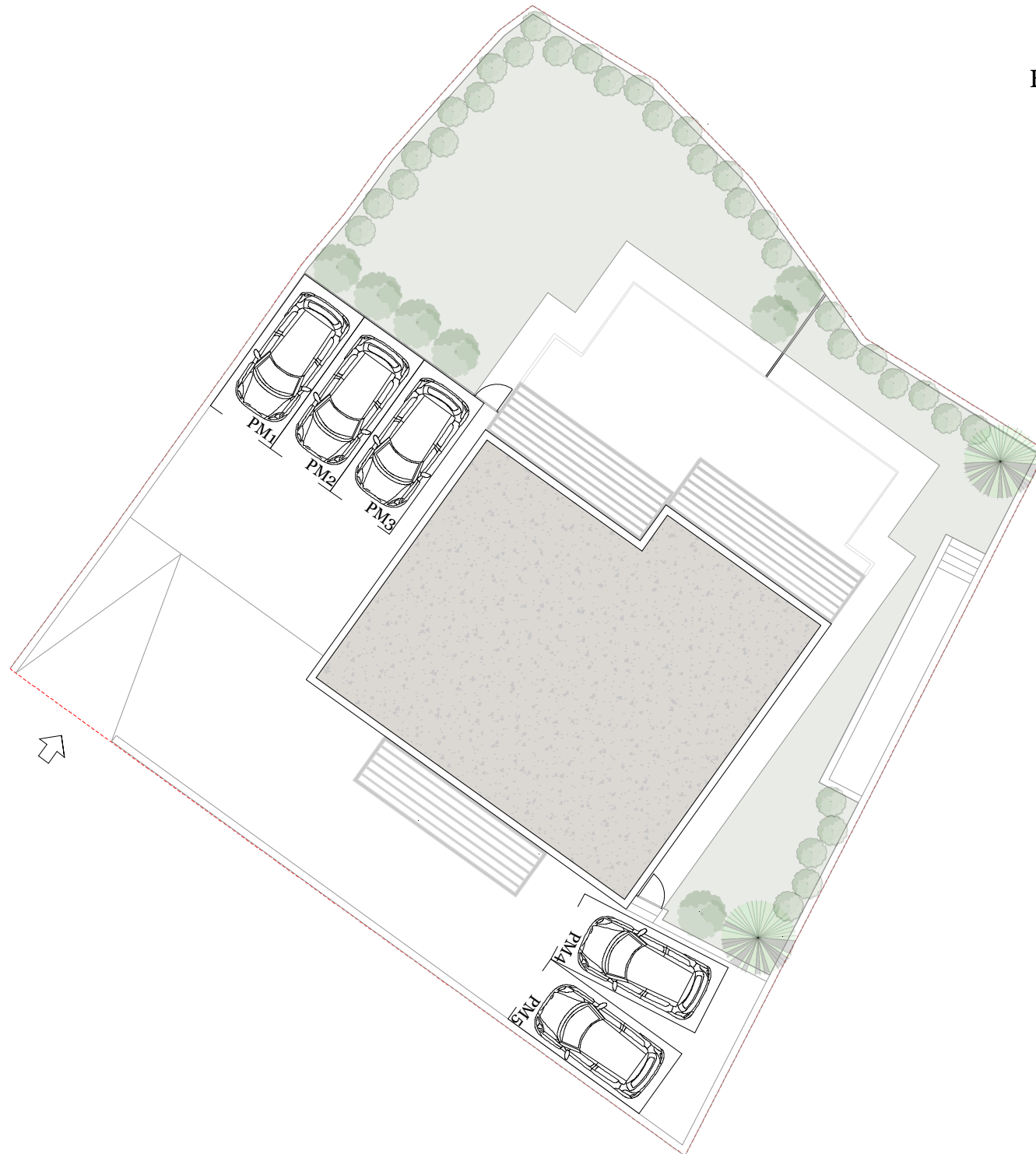
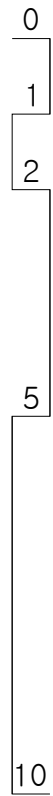


Situacija

POVRŠINA PARCELE
P=719m²

BRUTO POVRŠINA ZGRADE
GBP=572,58m²

BROJ PARKIRNIH MJESTA
=5PM



AP1

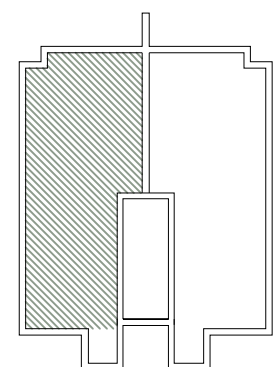
KATALOG STANOVA

1. Hodnik
7,29 m²
2. Kuhinja + dn.boravak
+ blagovaonica
40,57 m²
3. Kupaonica 1
6,45 m²
4. Spavaća soba 1
10,98 m²
5. Kupaonica 2
3,66 m²
6. Spavaća soba 2
9,83 m²
7. Terasa – natkrivena
11,83 m² x 0,5
= 5,92 m²
8. Vrt
121,85 m² x 0,1
= 12,19 m²
9. Parkirno mjesto
13,75 m² x 0,25 = 3,44 m²

UKUPNO 100,33 m²



ETAŽA: PRIZEMLJE

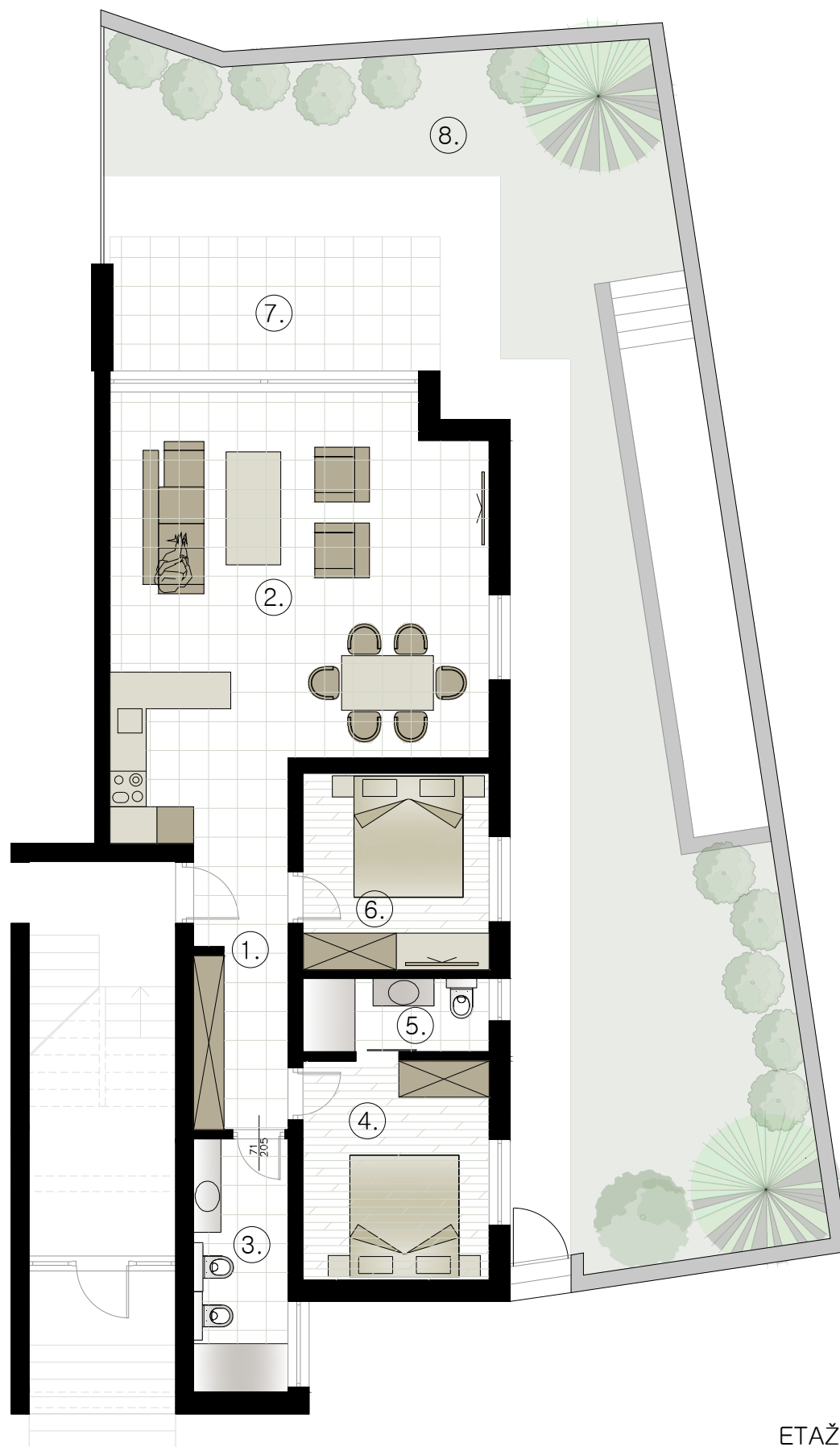


S1

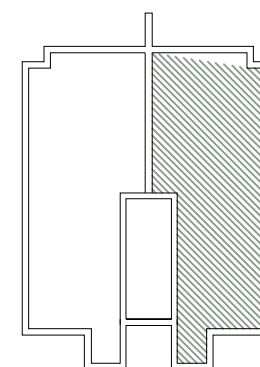
KATALOG STANOVA

1. Hodnik
7,29 m²
2. Kuhinja + dn.boravak
+ blagovaonica
40,57 m²
3. Kupaonica 1
6,45 m²
4. Spavaća soba 1
10,98 m²
5. Kupaonica 2
3,66 m²
6. Spavaća soba 2
9,83 m²
7. Terasa – natkrivena
11,83 m² x 0,5
= 5,92 m²
8. Terasa – natkrivena
99,19 m² x 0,1
= 9,92 m²
9. Parkirno mjesto
13,75 m² x 0,25 = 3,44 m²

UKUPNO 98,06 m²



ETAŽA: PRIZEMLJE

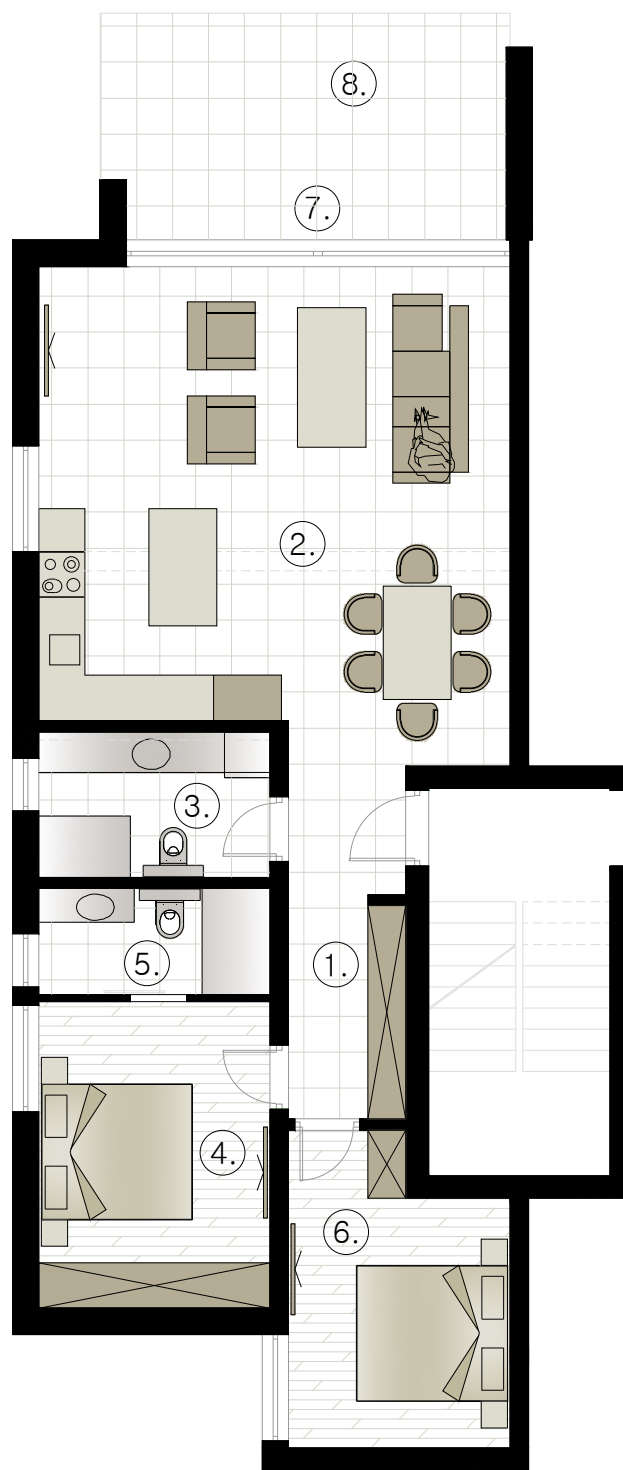


S2

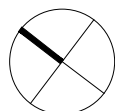
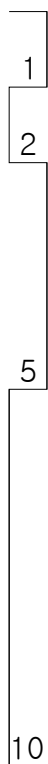
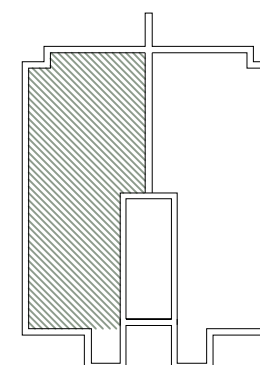
KATALOG STANOVA

1. Hodnik
7,29 m²
2. Kuhinja + dn.boravak
+ blagovaonica
39,14 m²
3. Kupaonica 1
5,87 m²
4. Spavaća soba 1
12,36 m²
5. Kupaonica 2
4,27 m²
6. Spavaća soba 2
11,03 m²
7. Terasa – loggia
4,01 m² x 0,75
= 3,01 m²
8. Terasa – natkrivena
11,83 m² x 0,5
= 5,92 m²
9. Parkirno mjesto
13,75 m² x 0,25 = 3,44 m²

UKUPNO 92,33 m²



ETAŽA: 1. KAT

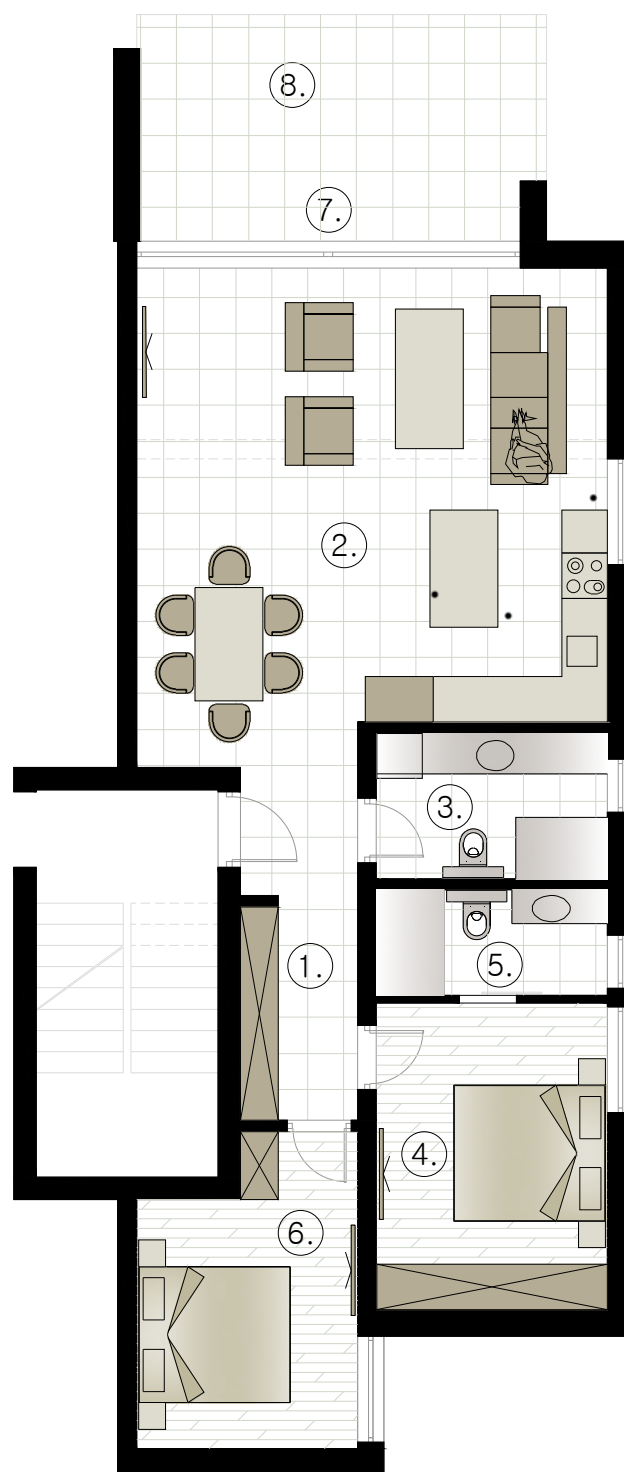


S3

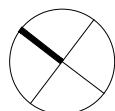
KATALOG STANOVA

1. Hodnik
7,29 m²
2. Kuhinja + dn.boravak
+ blagovaonica
39,14 m²
3. Kupaonica 1
5,87 m²
4. Spavaća soba 1
12,36 m²
5. Kupaonica 2
4,27 m²
6. Spavaća soba 2
11,03 m²
7. Terasa – loggia
4,01 m² x 0,75
= 3,01 m²
8. Terasa – natkrivena
11,83 m² x 0,5
= 5,92 m²
9. Parkirno mjesto
13,75 m² x 0,25 = 3,44 m²

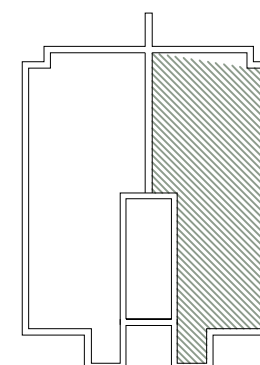
UKUPNO 92,32 m²



0
1
2
5
10



ETAŽA: 1. KAT

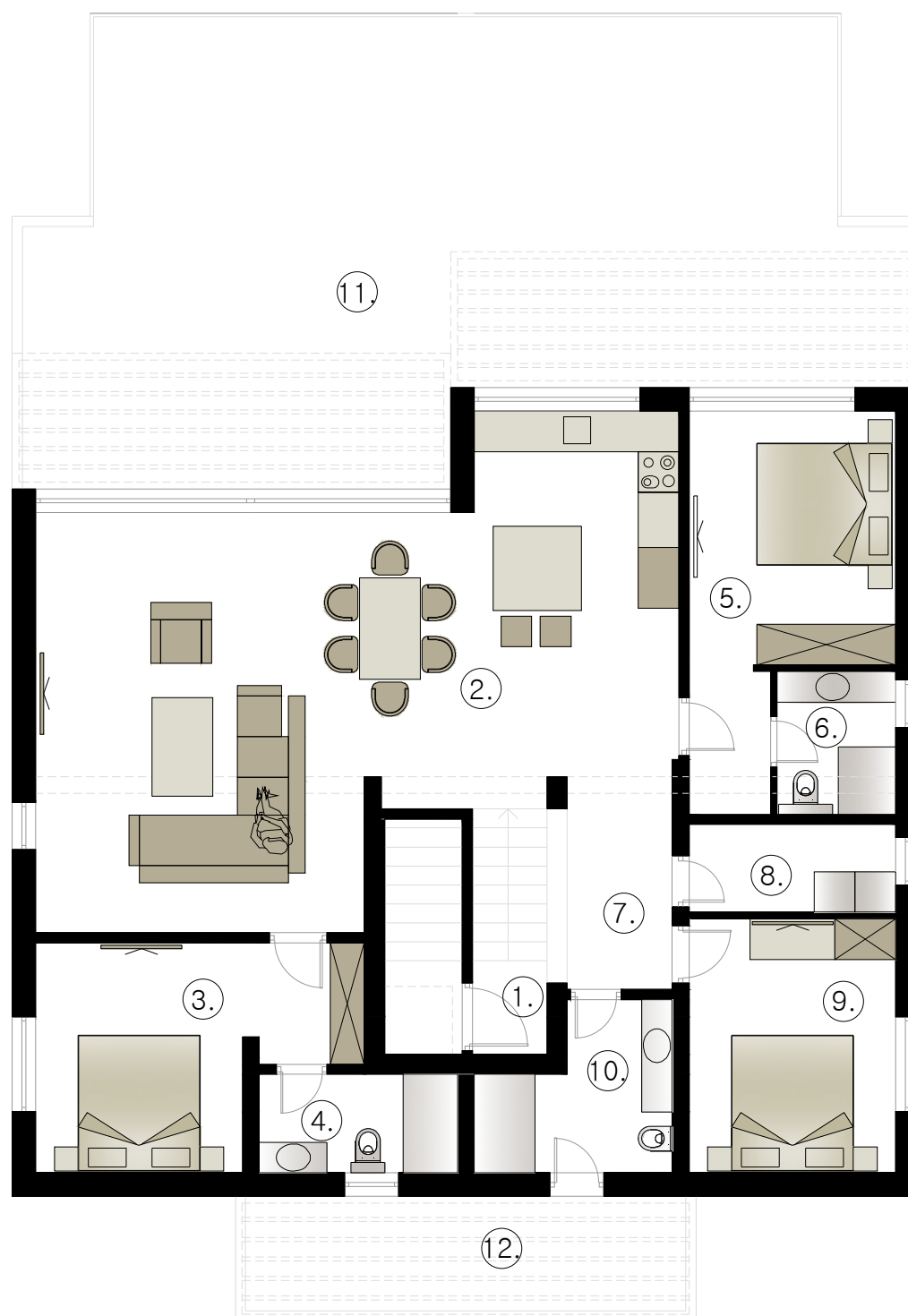


S4

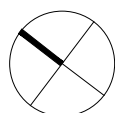
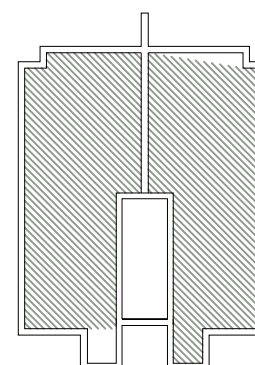
KATALOG STANOVA

1. Stubište
5,15 m² x 0,75
= 3,86 m²
2. Kuhinja + dn.boravak
+ blagovaonica
52,77 m²
3. Spavaća soba 1
13,60 m²
4. Kupaonica 1
4,25 m²
5. Spavaća soba 2
14,08 m²
6. Kupaonica 2
3,69 m²
7. Hodnik
5,64 m²
8. Praonica
3,95 m²
9. Spavaća soba 3
11,44 m²
10. Kupaonica 3
5,97 m²
11. Terasa – nenatkrivena
74,67 m² x 0,25
= 18,67 m²
12. Terasa – nenatkrivena
11,17 m² x 0,25
= 2,79 m²
13. Parkirno mjesto
13,75 m² x 0,25 = 3,44 m²

0
1
2
5
10



UVUČENA ETAŽA



UKUPNO 144,15 m²





