



Murter Urban villa 3

Ulica Marka Marulića

“The best things happen when you’re home.”




Murter Urban villa 3

Informacije o sudionicima u projektu:

Projektant: IZGRADNJA PROJEKT d.o.o
Adresa: Ul. Stjepana Radića 32, 22000 Šibenik
E-mail: izgradnja.projekt@gmail.com
Kontakt telefon: +385 98 336 718

Investitor: PATRIA NOSTRA d.o.o.
LEUT d.o.o.
E-mail: patria.nostra.zg@gmail.com
Kontakt telefon: +385 98 943 3026







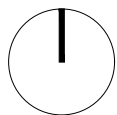
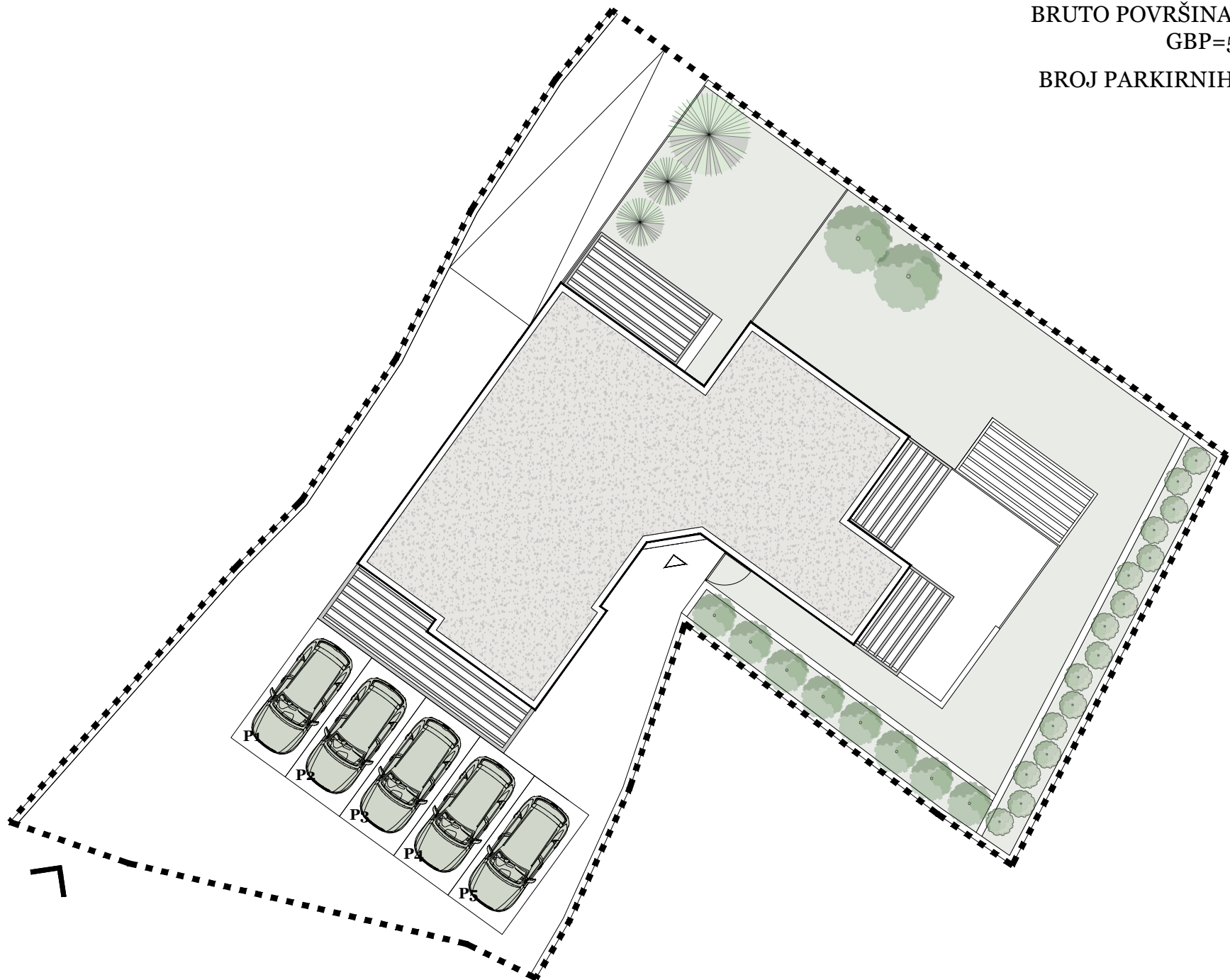
Situacija

POVRŠINA PARCELE
P=792 m²

BRUTO POVRŠINA ZGRADE
GBP=599,95 m²

BROJ PARKIRNIH MJESTA
=6 PM

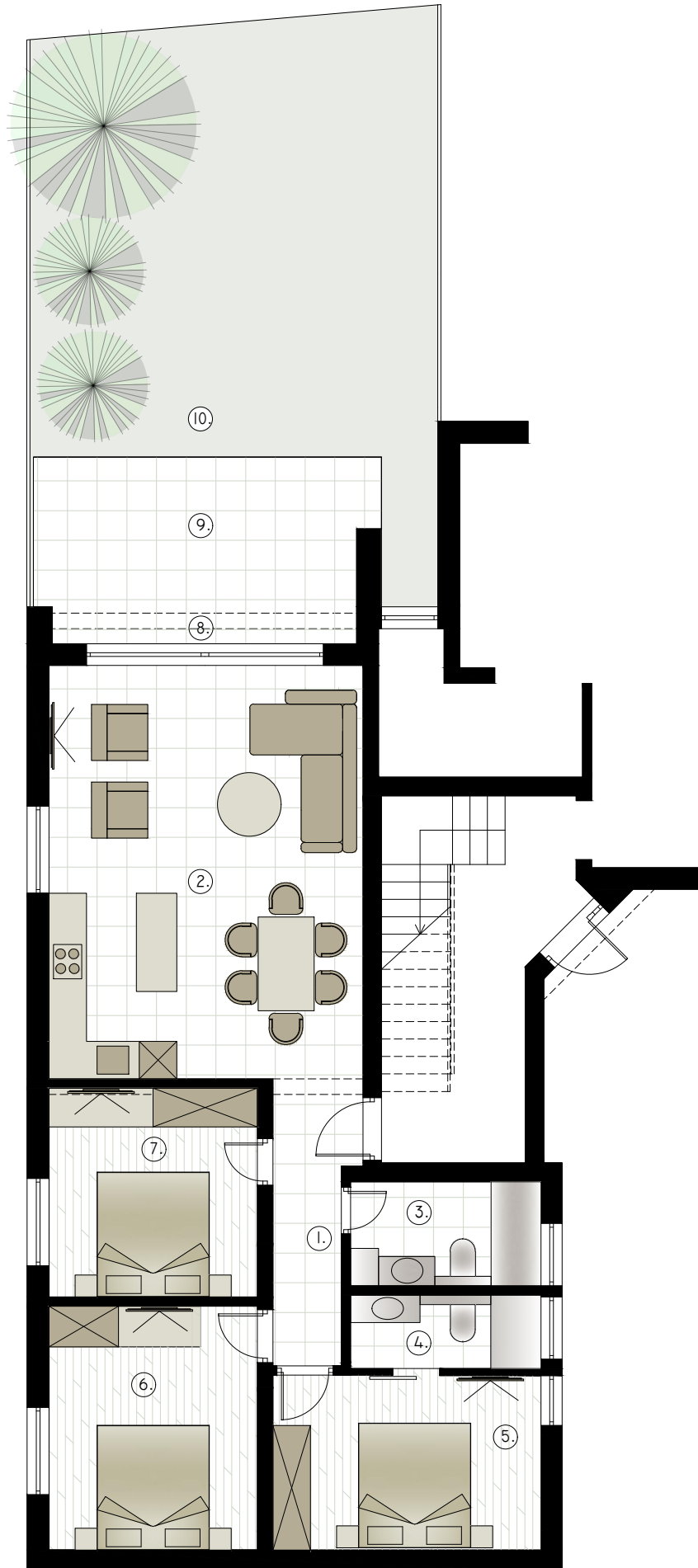
0
2
4
10
20



AP1

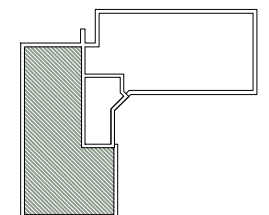
KATALOG STANOVA

0
1
2
5
10



1. hodnik
5,49 m²
2. kuhinja + dn.boravak
+ blagovaonica
33,46 m²
3. kupaonica 1
5,08 m²
4. kupaonica 2
3,59 m²
5. spavaća soba 1
12,07 m²
6. spavaća soba 2
13,05 m²
7. spavaća soba 3
11,10 m²
8. terasa - loggia
2,88 m² x 0,75 = 2,16 m²
9. terasa - natkrivena
12,90 m² x 0,50 = 6,45 m²
10. vrt
45,40 m² x 0,20 = 9,08 m²

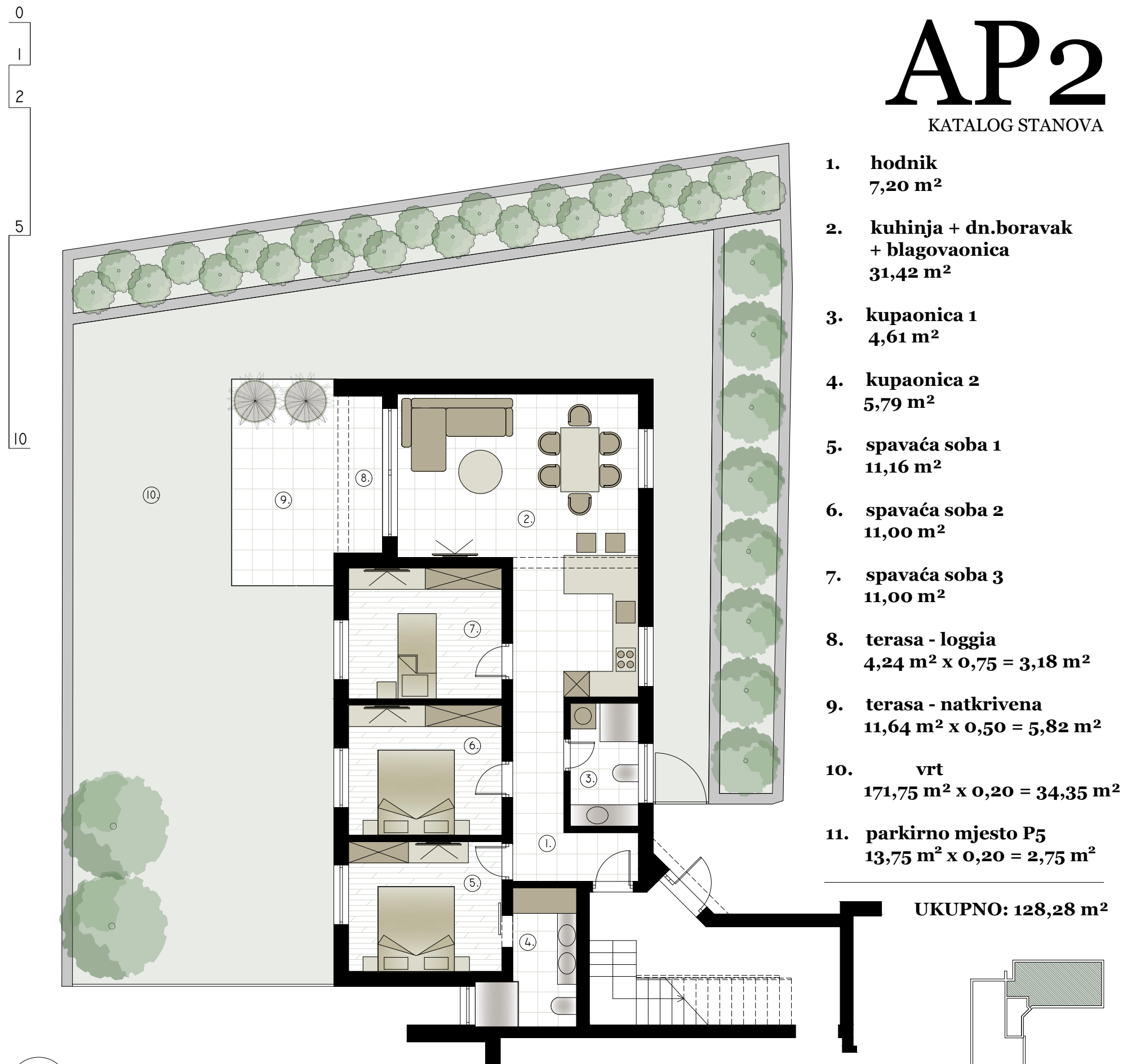
UKUPNO: 101,53 m²



ETAŽA: PRIZEMLJE

AP2

KATALOG STANOVA

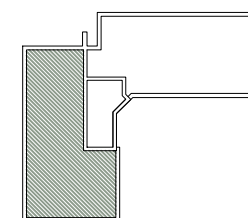
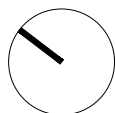
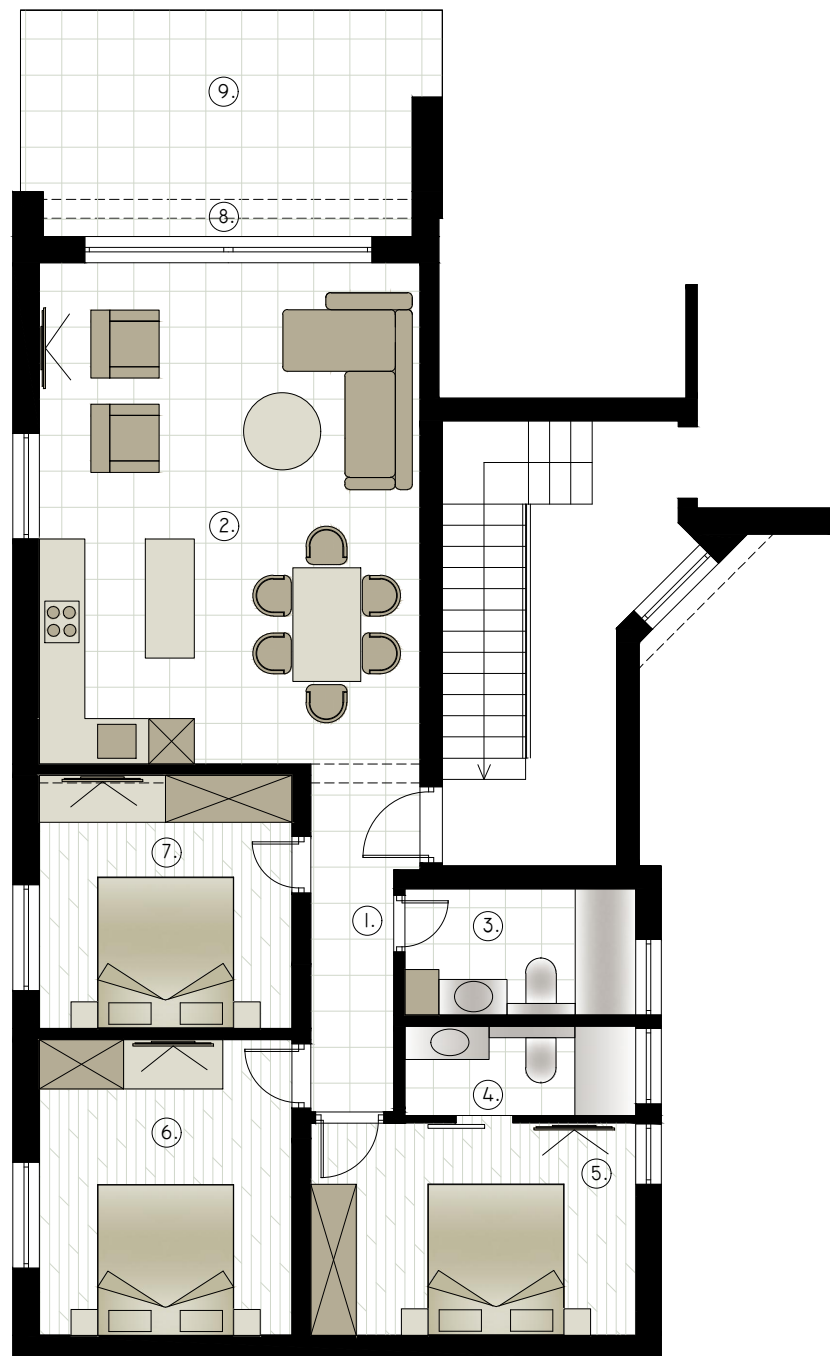


S1

KATALOG STANOVA

1. hodnik
5,49 m²
2. kuhinja + dn.boravak
+ blagovaonica
33,46 m²
3. kupaonica 1
5,08 m²
4. kupaonica 2
3,59 m²
5. spavaća soba 1
12,07 m²
6. spavaća soba 2
13,05 m²
7. spavaća soba 3
11,10 m²
8. terasa - loggia
2,88 m² x 0,75 = 2,16 m²
9. terasa - natkrivena
12,90 m² x 0,50 = 6,45 m²
10. parkirno mjesto P4
13,75 m² x 0,20 = 2,75 m²

UKUPNO: 95,20 m²

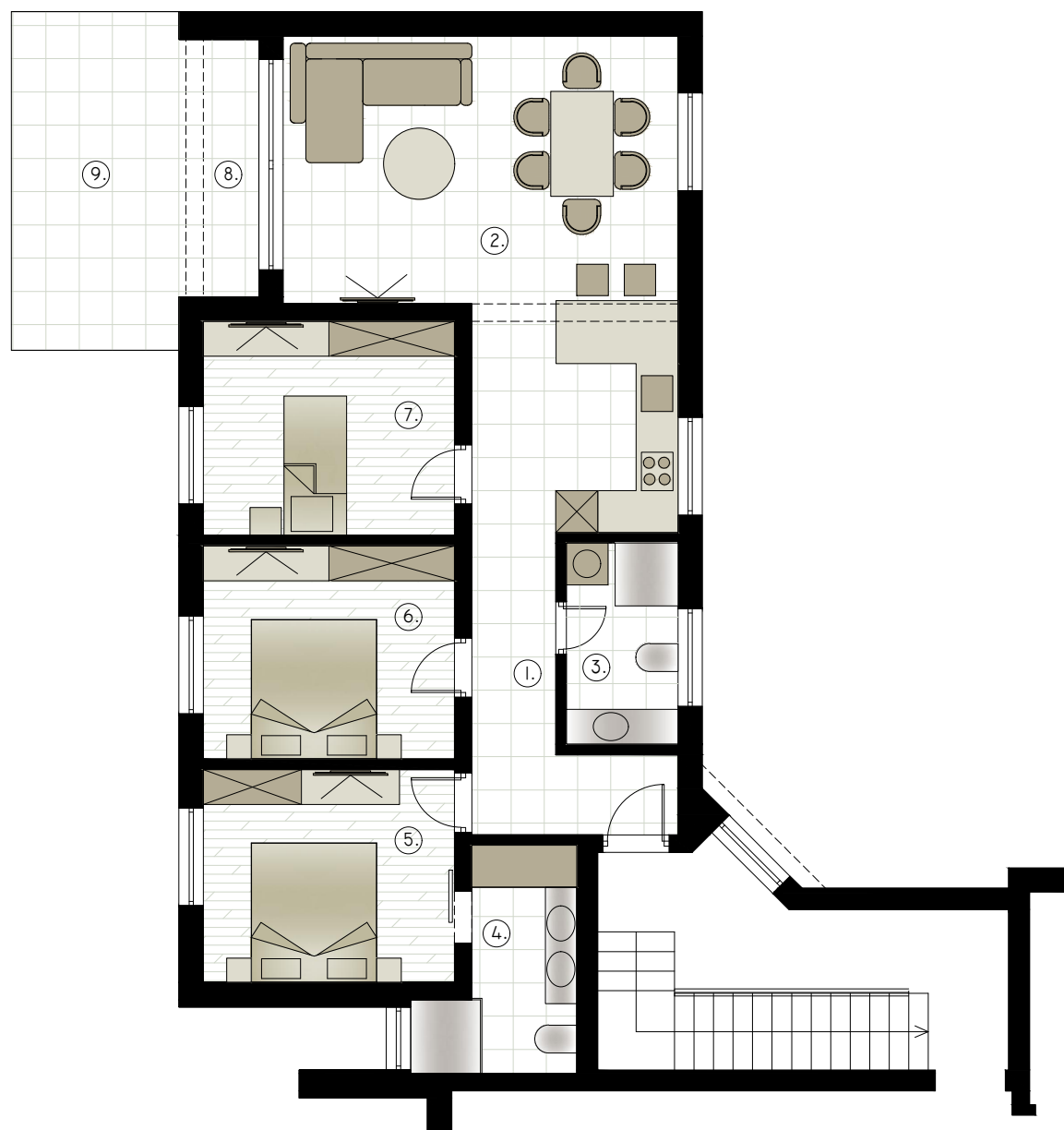


ETAŽA: PRVI KAT

S2

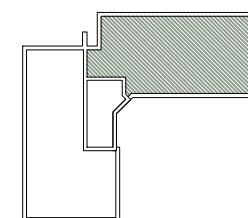
KATALOG STANOVA

0
1
2
5
10

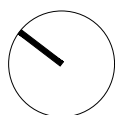


1. hodnik
7,20 m²
2. kuhinja + dn.boravak
+ blagovaonica
31,42 m²
3. kupaonica 1
4,61 m²
4. kupaonica 2
5,79 m²
5. spavaća soba 1
11,16 m²
6. spavaća soba 2
11,00 m²
7. spavaća soba 3
11,00 m²
8. terasa - loggia
4,24 m² x 0,75 = 3,18 m²
9. terasa - natkrivena
11,64 m² x 0,50 = 5,82 m²
10. parkirno mjesto P3
13,75 m² x 0,20 = 2,75 m²

UKUPNO: 93,93 m²



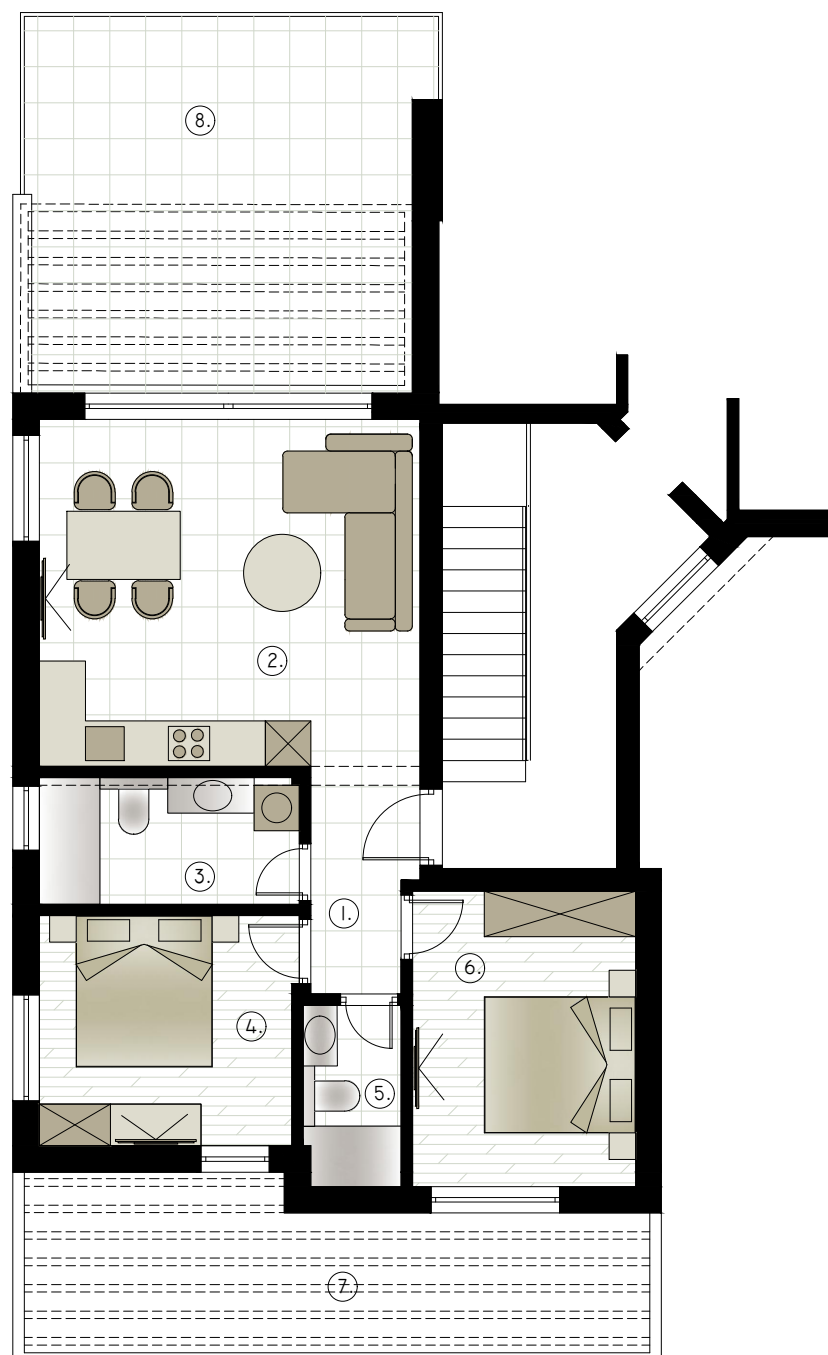
ETAŽA: PRVI KAT



S3

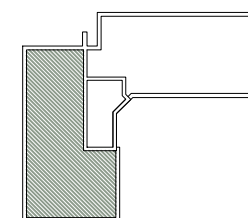
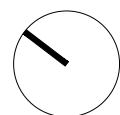
KATALOG STANOVA

0
1
2
5
10



1. hodnik
4,30 m²
2. kuhinja + dn.boravak
+ blagovaonica
23,20 m²
3. kupaonica 1
5,51 m²
4. spavaća soba 1
10,61 m²
5. kupaonica 2
3,05 m²
6. spavaća soba 2
11,52 m²
7. terasa 1 - nenatkrivena
17,17 m² x 0,25 = 4,29 m²
8. terasa 2 - nenatkrivena
25,68 m² x 0,25 = 6,42 m²
9. parkirno mjesto P2
13,75 m² x 0,20 = 2,75 m²

UKUPNO: 71,65 m²

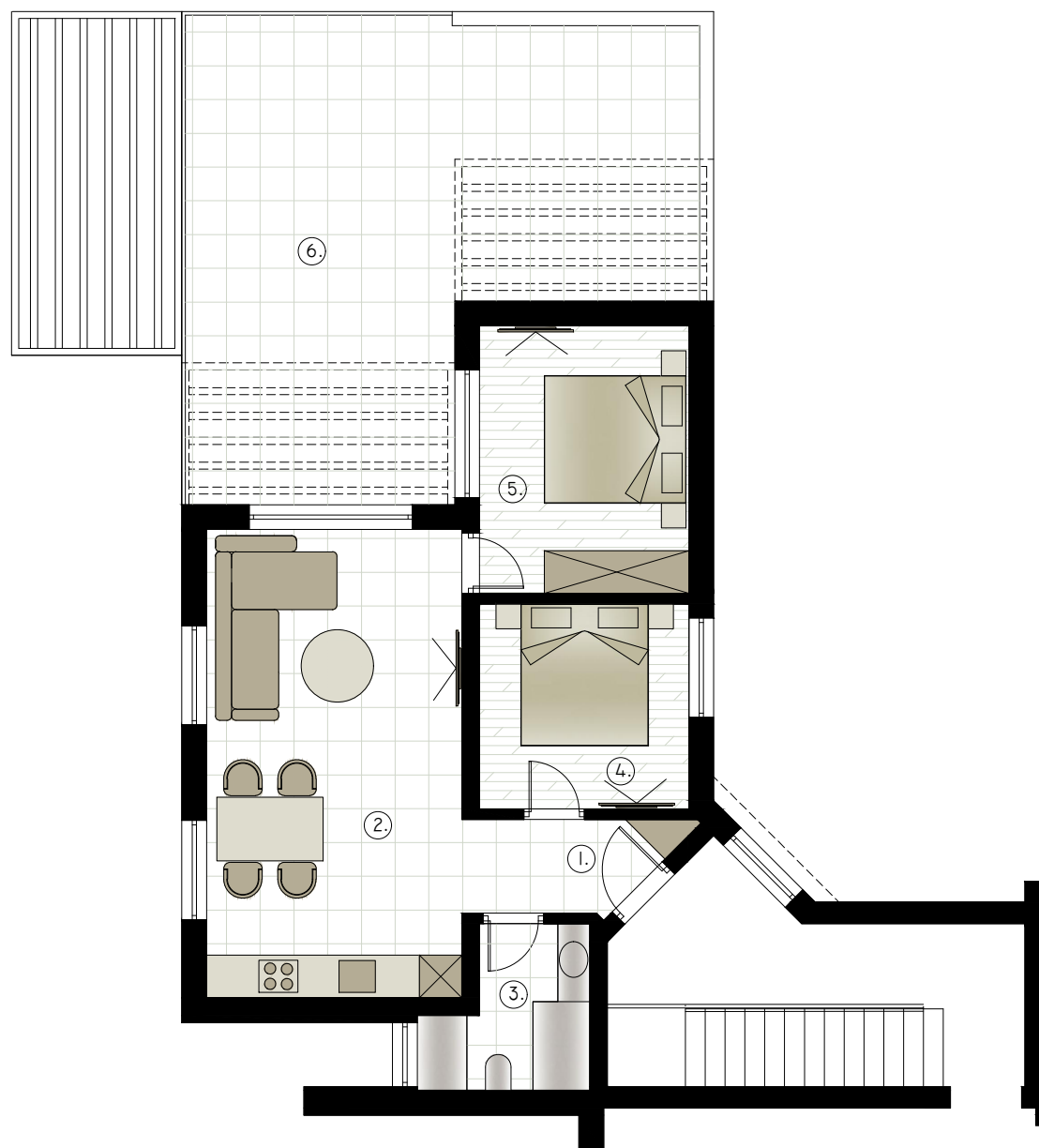


UVUČENA ETAŽA

S4

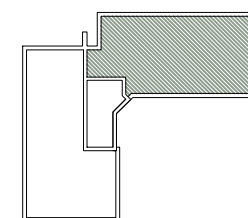
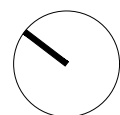
KATALOG STANOVA

0
1
2
5
10



1. hodnik
3,60 m²
2. kuhinja + dn.boravak
+ blagovaonica
23,77 m²
3. kupaonica 1
4,58 m²
4. spavaća soba 1
8,53 m²
5. spavaća soba 2
11,12 m²
6. terasa - nenatkrivena
40,73 m² x 0,25 = 10,18 m²
9. parkirno mjesto P2
13,75 m² x 0,20 = 2,75 m²

UKUPNO: 64,53 m²



UVUČENA ETAŽA





