



Murter Urban villa 5

Ulica Jurja Dalmatinca

“The best things happen when you’re home.”



Murter Urban villa 5

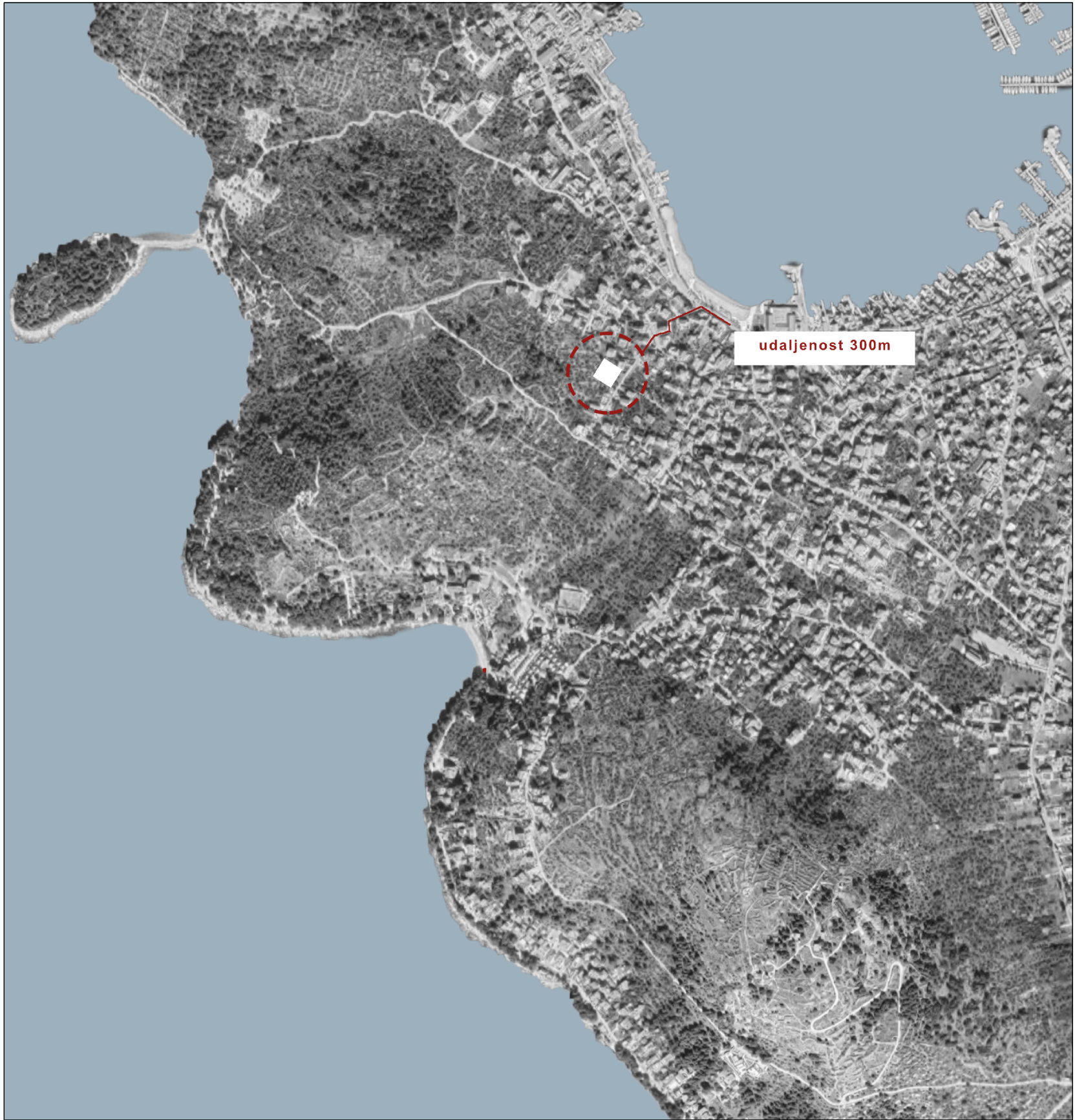
Informacije o sudionicima u projektu:

Projektant: IZGRADNJA PROJEKT d.o.o
Adresa: Ul. Stjepana Radića 32, 22000 Šibenik
Email: izgradnja.projekt@gmail.com
Kontakt telefon: +385 98 336 718

Investitor: PATRIA NOSTRA d.o.o
IMPRESS GRADNJA d.o.o.
Email: impressgradnja@gmail.com
patria.nostra.zg@gmail.com
Kontakt telefon: +385 98 943 3026





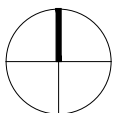
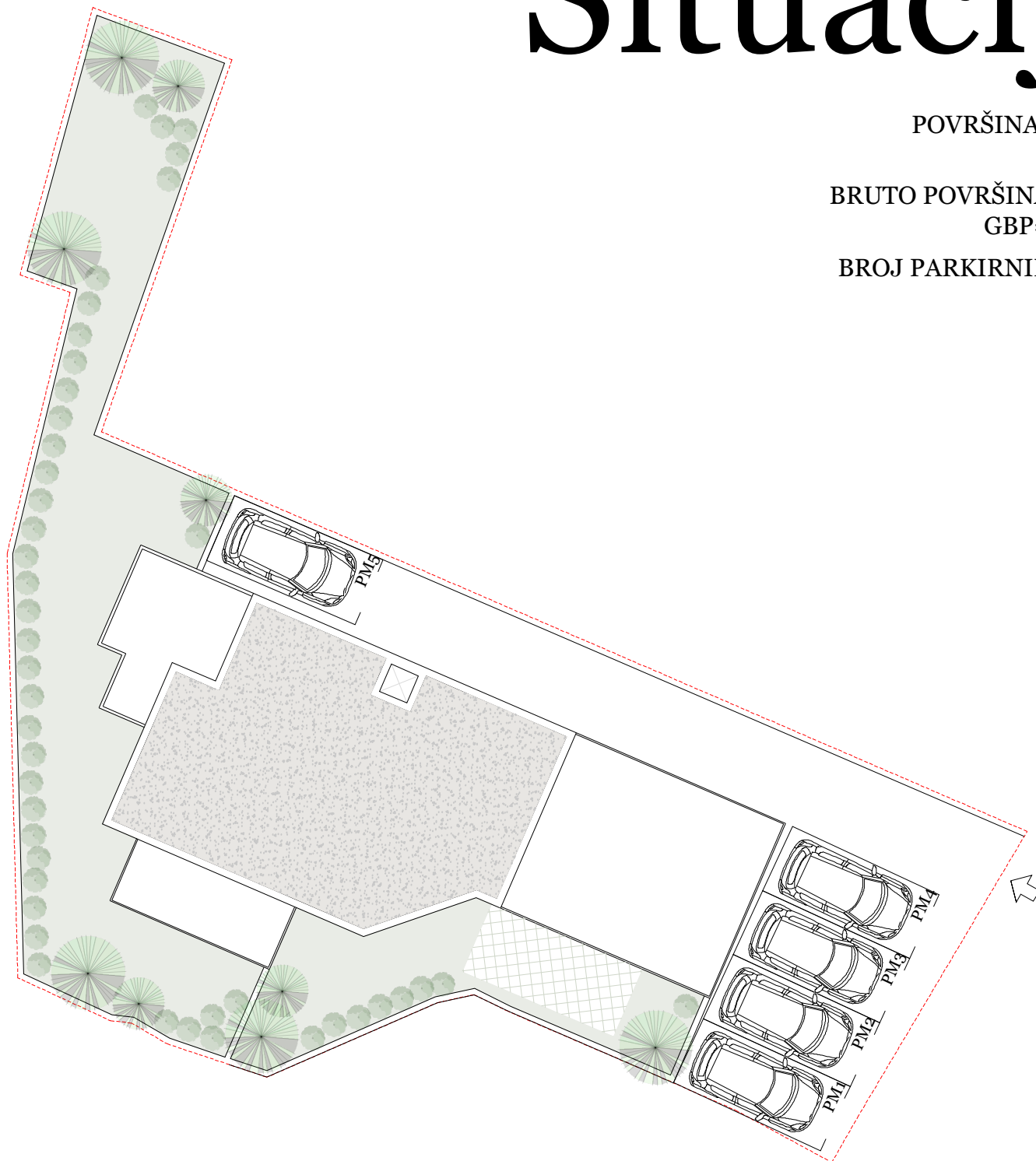


Situacija

POVRŠINA PARCELE
P=553m²

BRUTO POVRŠINA ZGRADE
GBP=435,66m²

BROJ PARKIRNIH MJESTA
=5PM

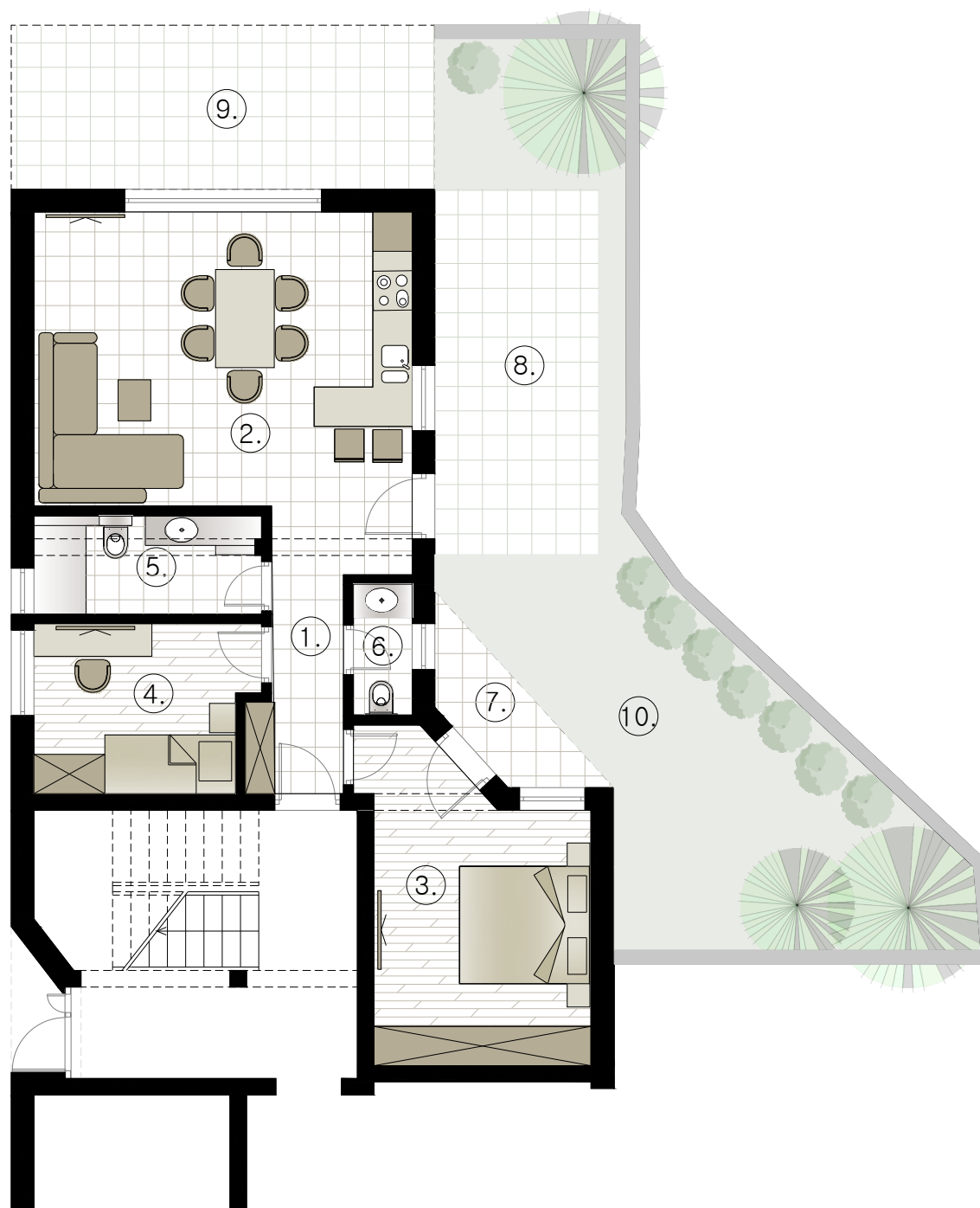


AP1

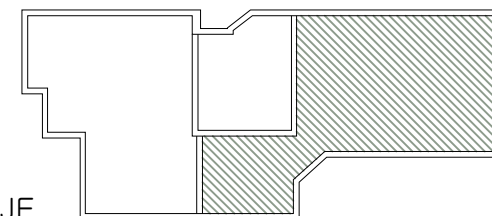
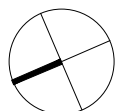
KATALOG STANOVA

1. Hodnik
4,26 m²
2. Kuhinja + dn.boravak
+ blagovaonica
28,26 m²
3. Spavaća soba 1
15,00 m²
4. Spavaća soba 2
8,44 m²
5. Kupaonica
5,22 m²
6. Sanitarni čvor
1,80 m²
7. Terasa – natkrivena
4,80 x 0,5
= 2,40m²
8. Terasa – nenatkrivena
16,22 m² x 0,25
= 4,06 m²
9. Terasa – natkrivena
16,21 m² x 0,5
= 8,11 m²
10. Vrt
39,66 m² x 0,1
= 3,97 m²
11. Parkirno mjesto
15,00 m² x 0,25 = 3,75 m²

UKUPNO 85,27 m²



0
1
2
5
10



ETAŽA: PRIZEMLJE

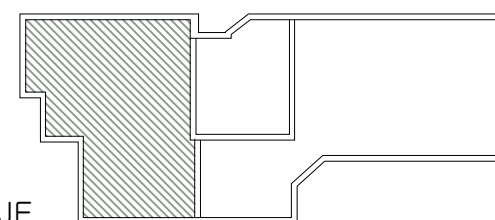
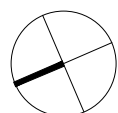
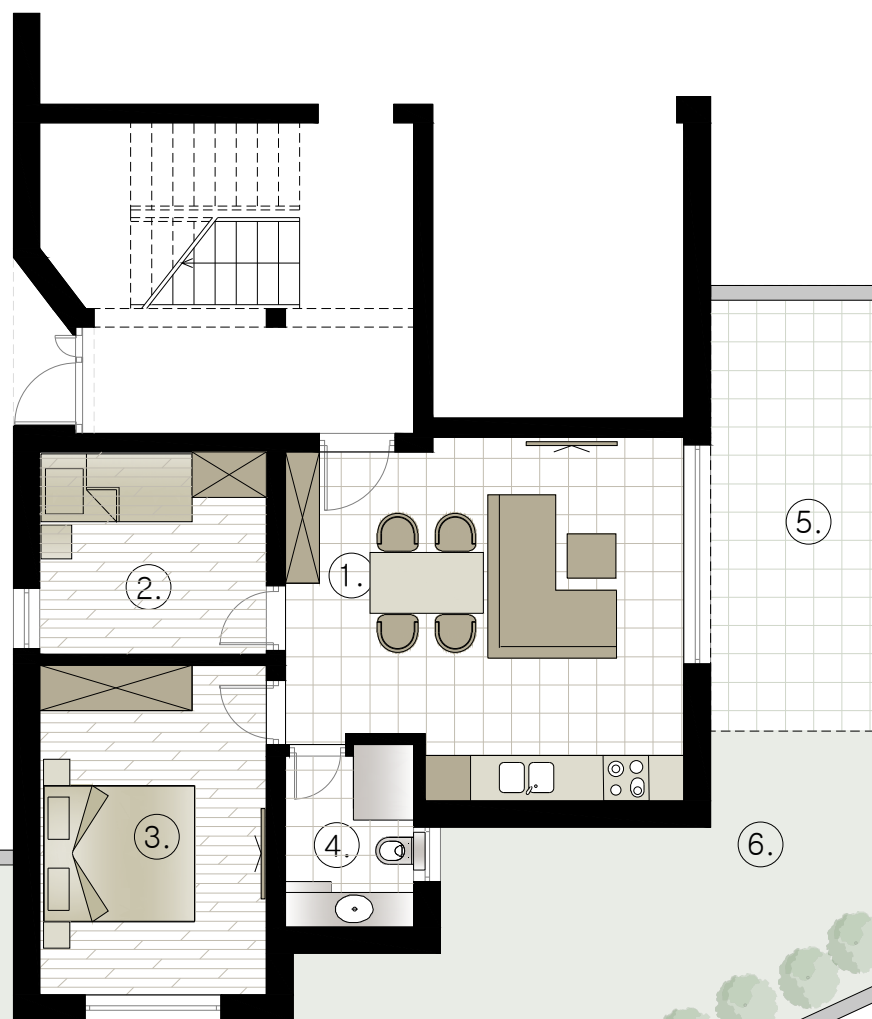
S1

KATALOG STANOVA

1. Kuhinja + dn.boravak
+ blagovaonica
23,44 m²
2. Spavaća soba 1
8,00 m²
3. Spavaća soba 2
13,07 m²
4. Kupaonica
3,95 m²
5. Terasa - natkrivena
14,74 m² x 0,5
= 7,37 m²
6. Vrt
152,27 m² x 0,1
= 15,23 m²
7. Parkirno mjesto
16,00 m² x 0,25 = 4,00 m²

UKUPNO 75,06 m²

0
1
2
5
10

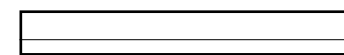


ETAŽA: PRIZEMLJE

S2

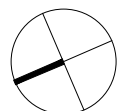
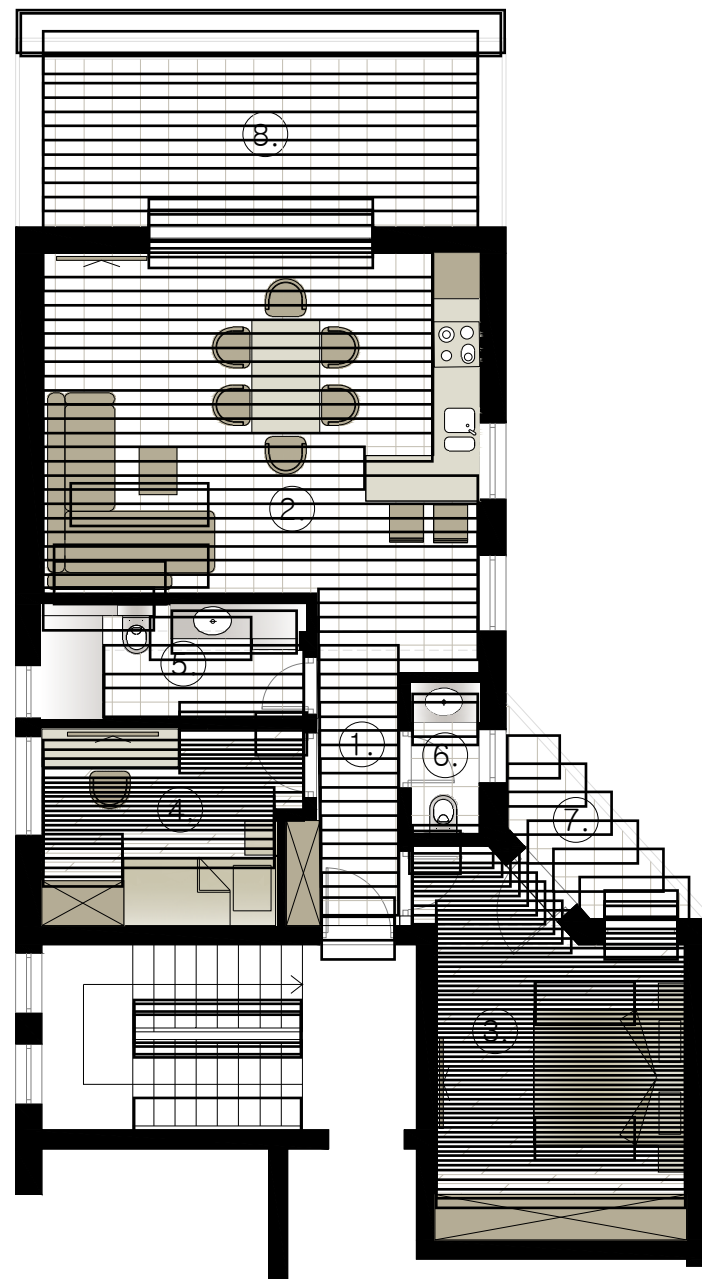
KATALOG STANOVA

1. Hodnik
4,26 m²
2. Kuhinja + dn.boravak
+ blagovaonica
28,26 m²
3. Spavaća soba 1
15,00 m²
4. Spavaća soba 2
8,44 m²
5. Kupaonica
5,22 m²
6. Sanitarni čvor
1,80 m²
7. Balkon – natkriveni
4,80 x 0,5
= 2,40m²
8. Terasa – natkrivena
16,22 m² x 0,5
= 8,11 m²
9. Parkirno mjesto
16,00 m² x 0,25 = 4,00 m²

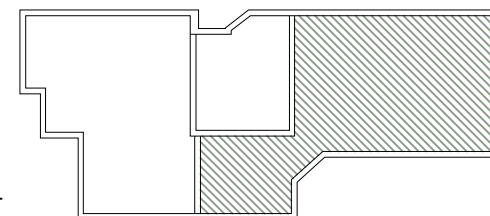


UKUPNO 77,49 m²

0
1
2
5
10



ETAŽA: PRVI KAT



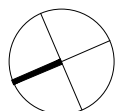
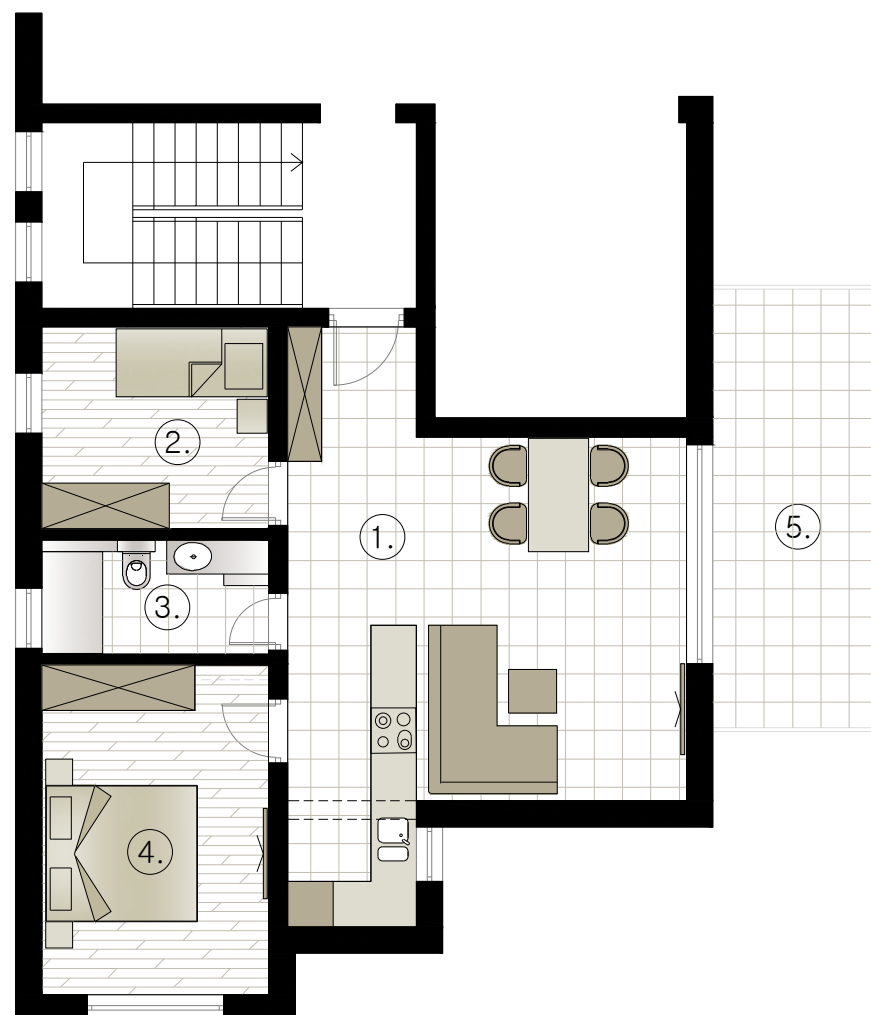
S3

KATALOG STANOVA

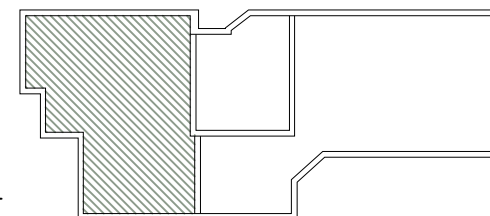
1. Kuhinja + dn.boravak
+ blagovaonica
30,58 m²
2. Spavaća soba 1
8,00 m²
3. Kupaonica
4,51 m²
4. Spavaća soba 2
13,07 m²
5. Balkon – natkriveni
14,74 m² x 0,5
= 7,37 m²
6. Parkirno mjesto
16 m² x 0,25 = 4,00 m²

UKUPNO 67,53 m²

0
1
2
5
10



ETAŽA: PRVI KAT

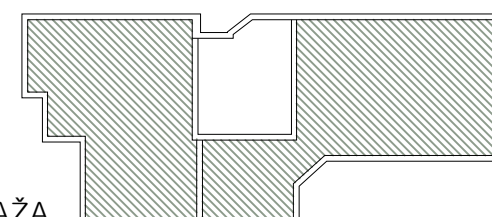
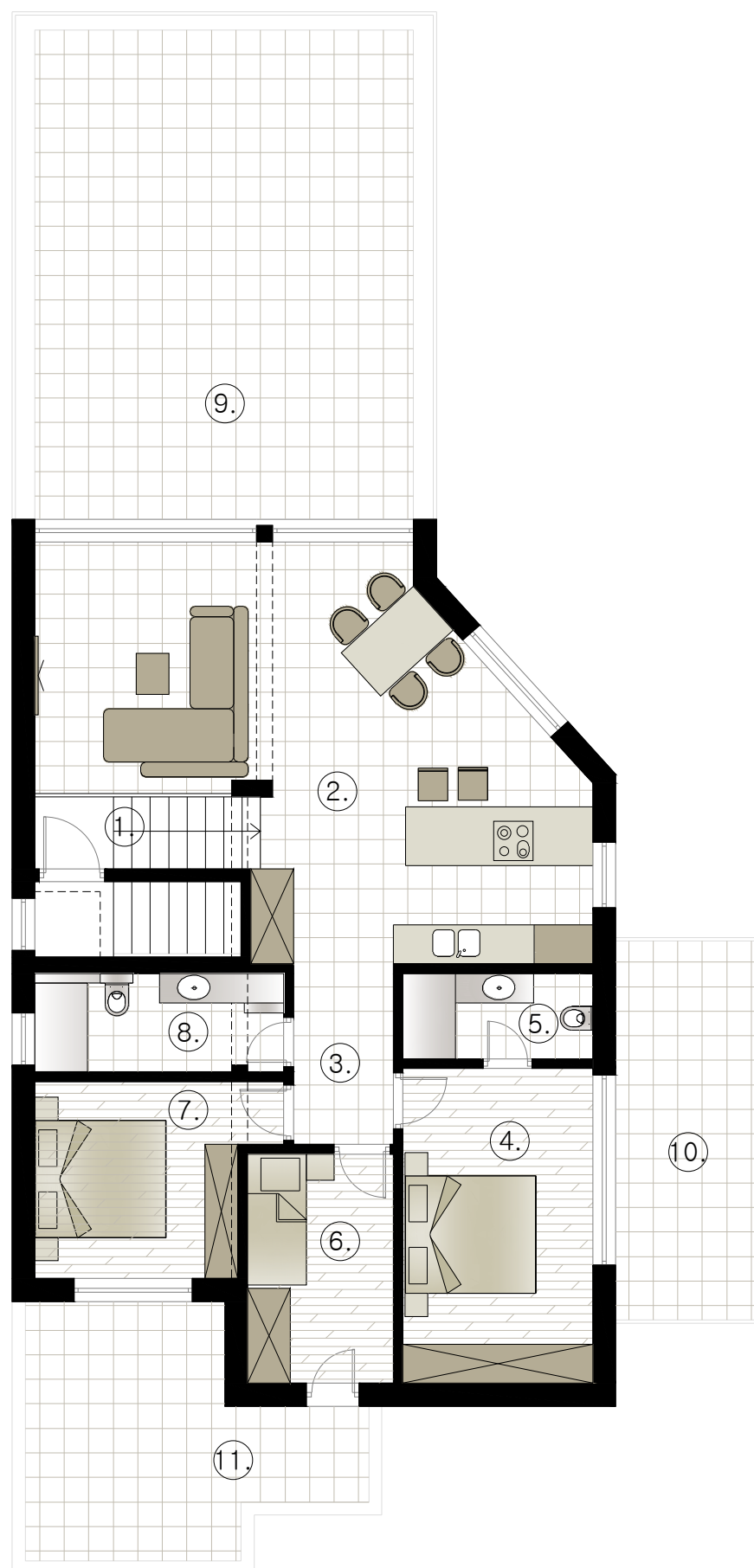


S4

KATALOG STANOVA

1. Stubište
3,78 x 0,75
= 2,84m²
2. Kuhinja + dn.boravak
+ blagovaonica
39,37 m²
3. Hodnik
4,05 m²
4. Spavaća soba 1
13,95 m²
5. Kupaonica 1
3,77 m²
6. Spavaća soba 2
7,78 m²
7. Spavaća soba 3
10,15m²
8. Kupaonica 2
5,56 m²
9. Terasa – nenatkrivena
49,16 m² x 0,25
= 12,29 m²
10. Terasa – nenatkrivena
14,74 m² x 0,25
= 3,69 m²
11. Terasa – nenatkrivena
16,21 m² x 0,25
= 4,18 m²
10. Parkirno mjesto
17,00 m² x 0,25 = 4,25 m²

UKUPNO 111,88 m²



ETAŽA: UVUČENA ETAŽA





